

GIS Day 2018, University of Buffalo



ArcGIS Pro – Not So New, but Maybe New to You?

Mark Scott, Solutions Engineer, Esri-Boston

Local Government Business Development Team

msscott@esri.com

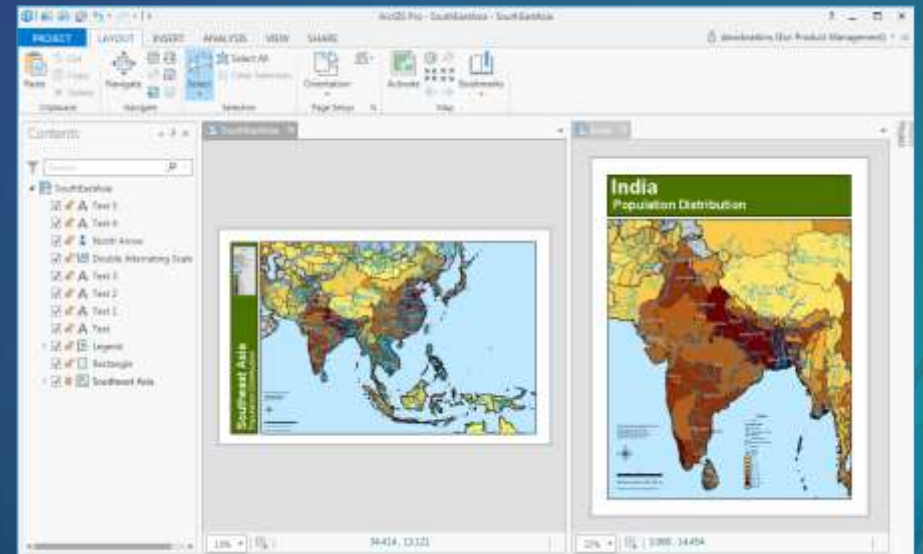
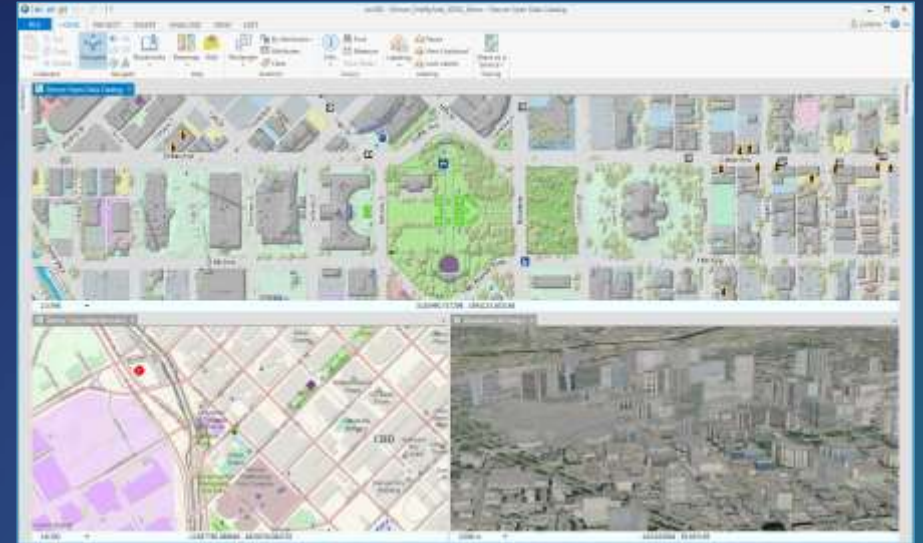


@ArcGISPro

GIS
INSPIRING
WHAT'S
NEXT

ArcGIS Pro

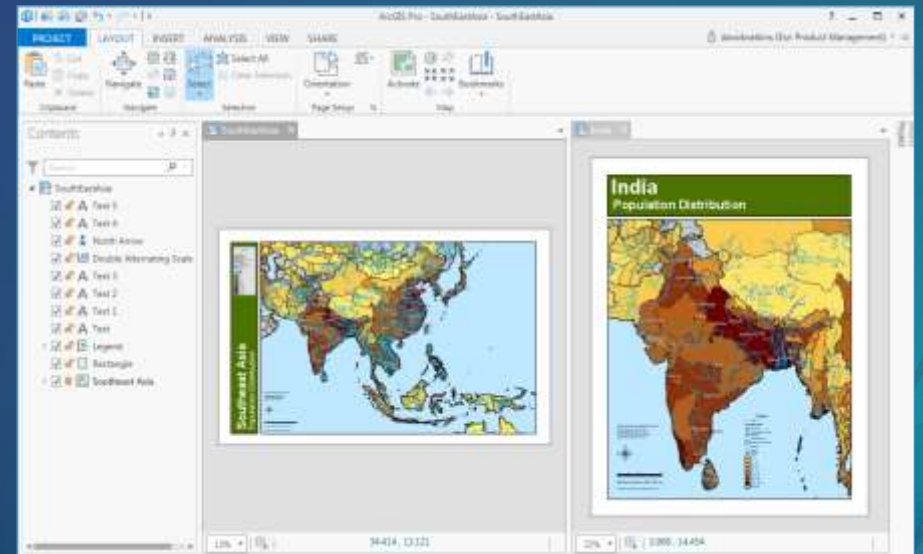
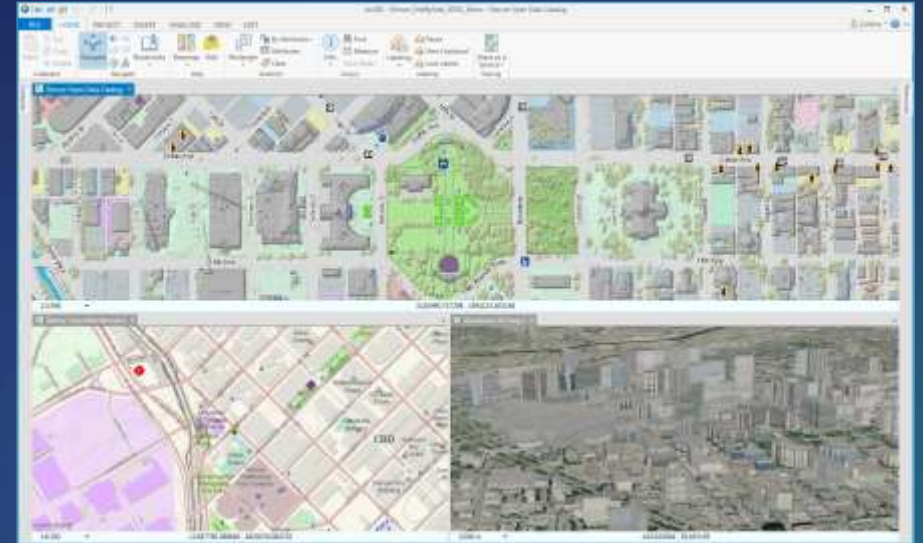
- 64 bit, multi-threaded
- Simplified user interface
- Integrated with the ArcGIS platform
- Combined 2D/3D experience
- Multiple maps and layouts
- Improved analysis experience
- Many years in development
- Several years of released product
- At version 2.2.3, and evolving



ArcGIS Pro

- 64 bit, multi-threaded
- Simplified user interface
- Integrated with the ArcGIS platform
- Combined 2D/3D experience
- Multiple maps and layouts
- Improved analysis experience

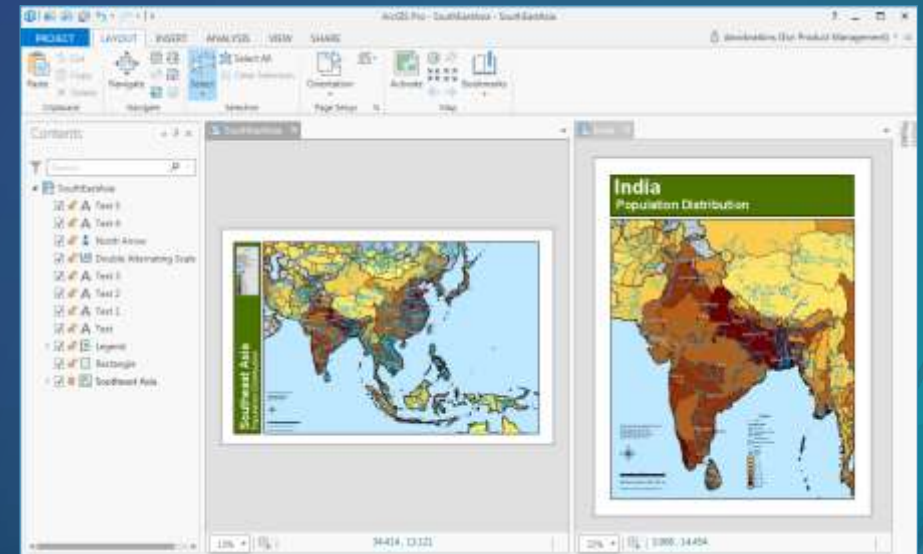
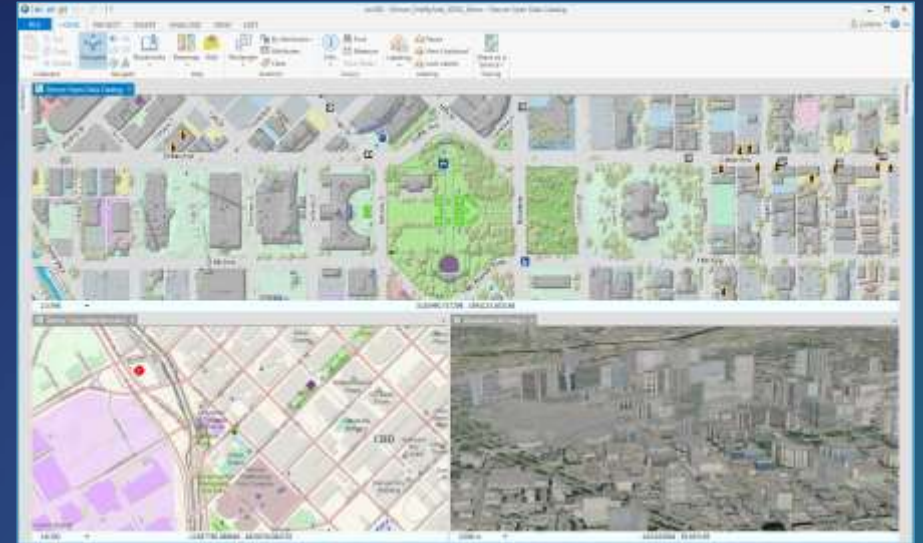
Someday it will replace ArcMap



ArcGIS Pro

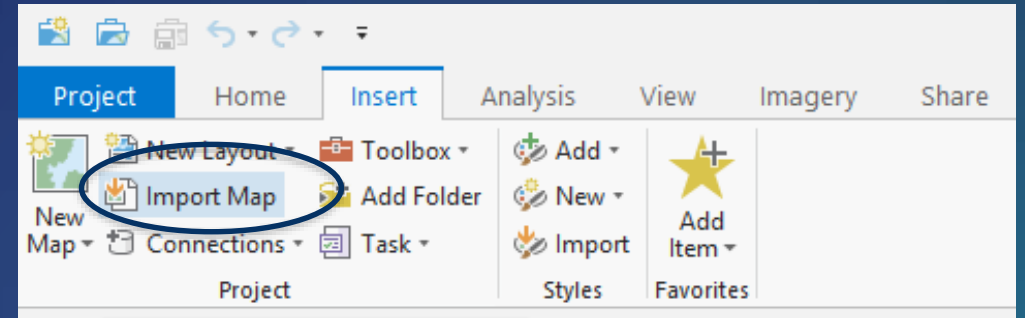
- 64 bit, multi-threaded
- Simplified user interface
- Integrated with the ArcGIS platform
- Combined 2D/3D experience
- Multiple maps and layouts
- Improved analysis experience

How do you get started?



Import existing maps, scenes, and globes

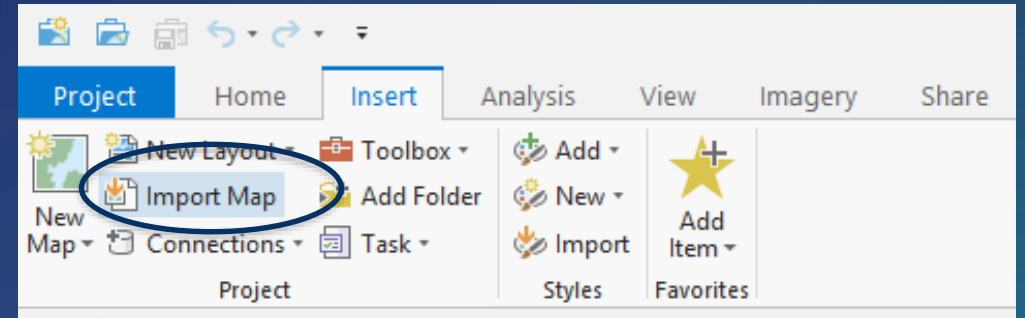
Import existing maps, scenes, and globes



Import existing maps, scenes, and globes

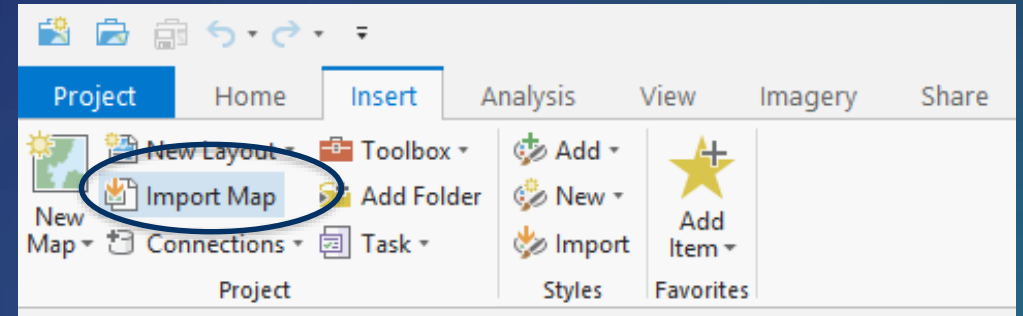
- **What will import?**

- .mxd, .sxd, .3dd files
- **Maps, layouts, symbology, scenes, and models**

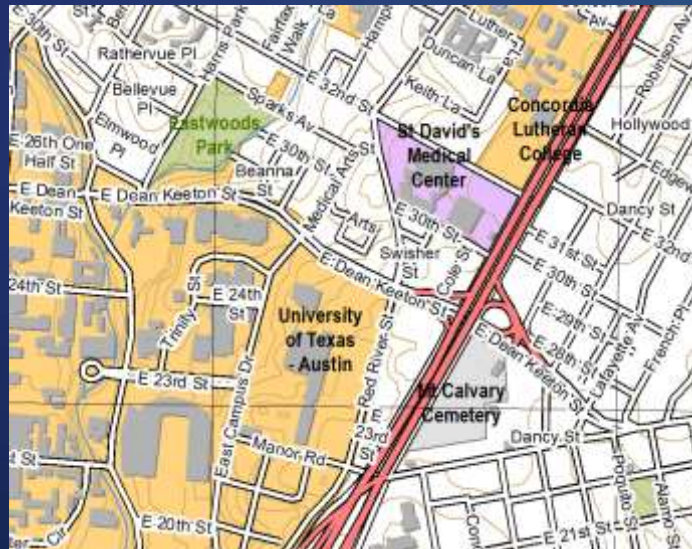


Import existing maps, scenes, and globes

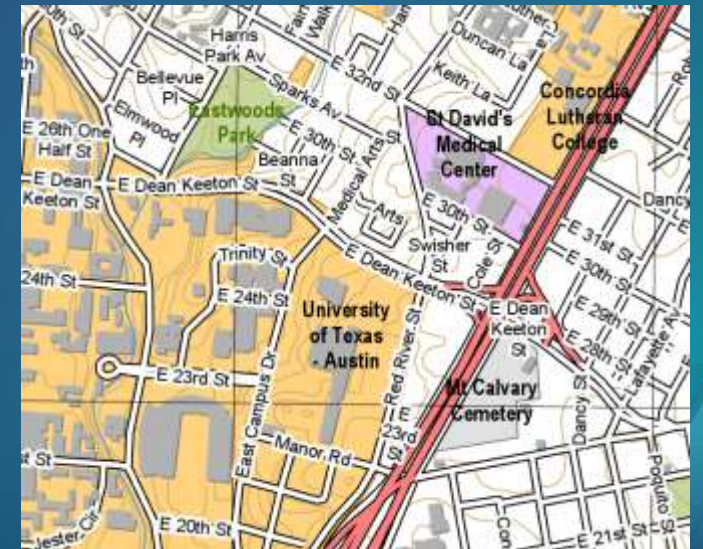
- What will import?
 - .mxd, .sxd, .3dd files
 - Maps, layouts, symbology, scenes, and models
- Results should look the same



ArcMap



ArcGIS Pro



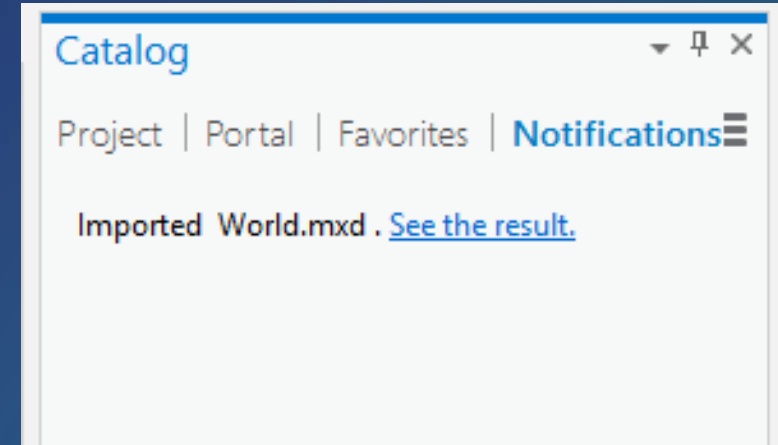
What if something doesn't look the same?

What if something does not look the same?

- Occasionally, things may differ slightly
 - Example: OLE objects are not supported
 - Label placement has been improved
 - Anti-aliasing used for text and line work

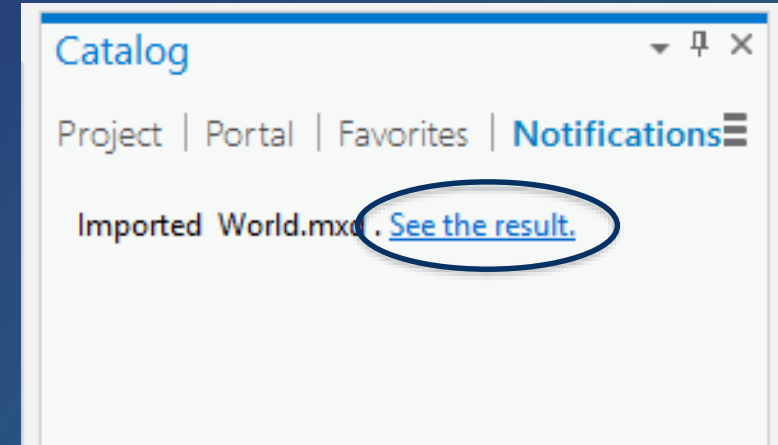
What if something doesn't look the same?

- Occasionally, things may differ slightly
 - Example: OLE objects are not supported
 - Label placement has been improved
 - Anti-aliasing used for text and line work
- Check the notifications



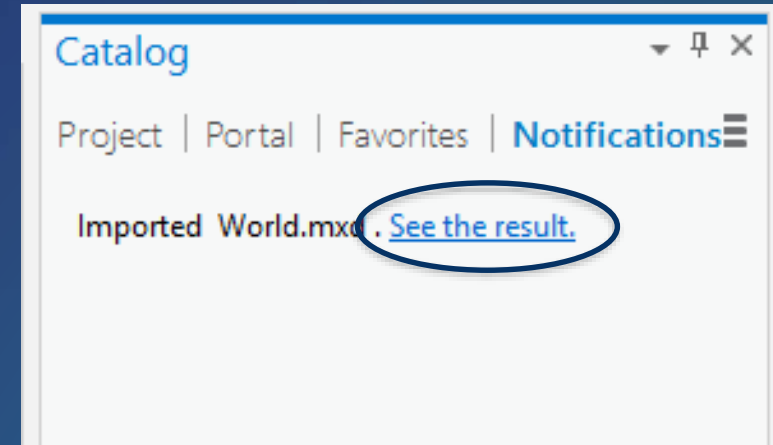
What if something doesn't look the same?

- Occasionally, things may differ slightly
 - Example: OLE objects are not supported
 - Label placement has been improved
 - Anti-aliasing used for text and line work
- Check the notifications



What if something doesn't look the same?

- Occasionally, things may differ slightly
 - Example: OLE objects are not supported
 - Label placement has been improved
 - Anti-aliasing used for text and line work
- Check the notifications



Import results for World.mxd

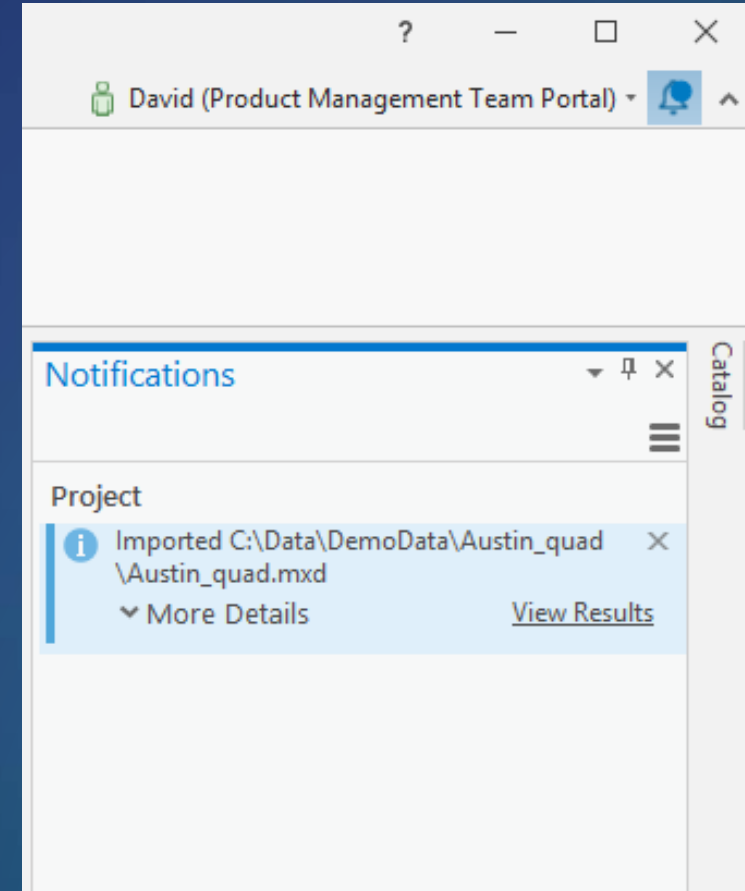
The following messages were produced when this map or scene was imported: C:\Users\dauidw\Desktop\World.mxd

| Message Name | Type | Severity | Code | Description | Component Name | Component Type |
|--------------|---------|----------|-------|---|----------------|----------------|
| | Warning | Medium | 20039 | OLE objects are not supported and were dropped from the layout. | World | Layout |

What if something doesn't look the same?

Note: Notifications changed at 2.2

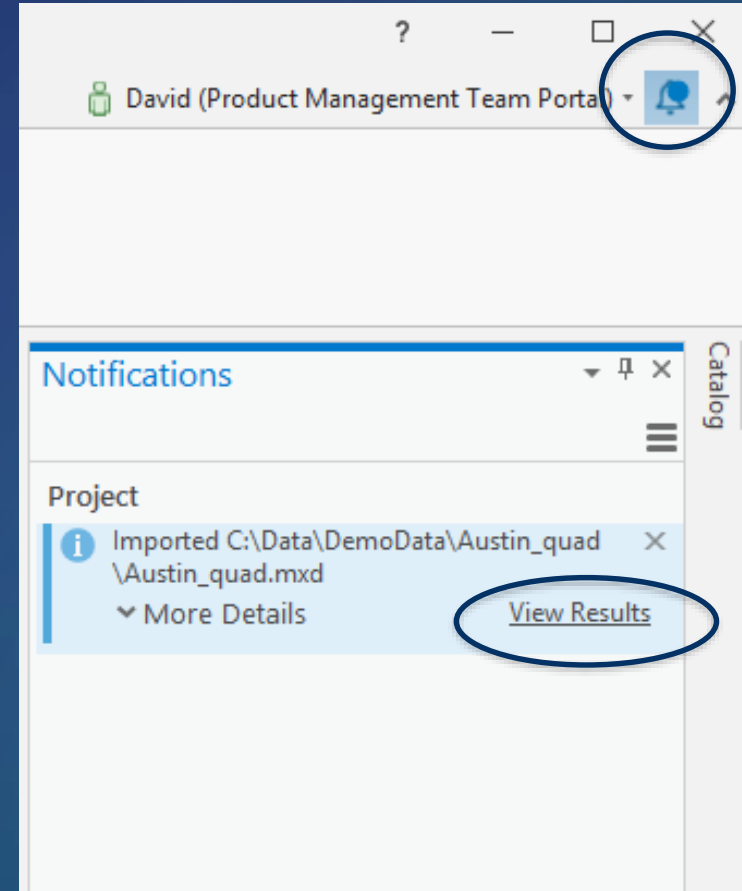
- Occasionally, things may differ slightly
 - Example: OLE objects are not supported
 - Label placement has been improved
 - Anti-aliasing used for text and line work
- Check the notifications



What if something doesn't look the same?

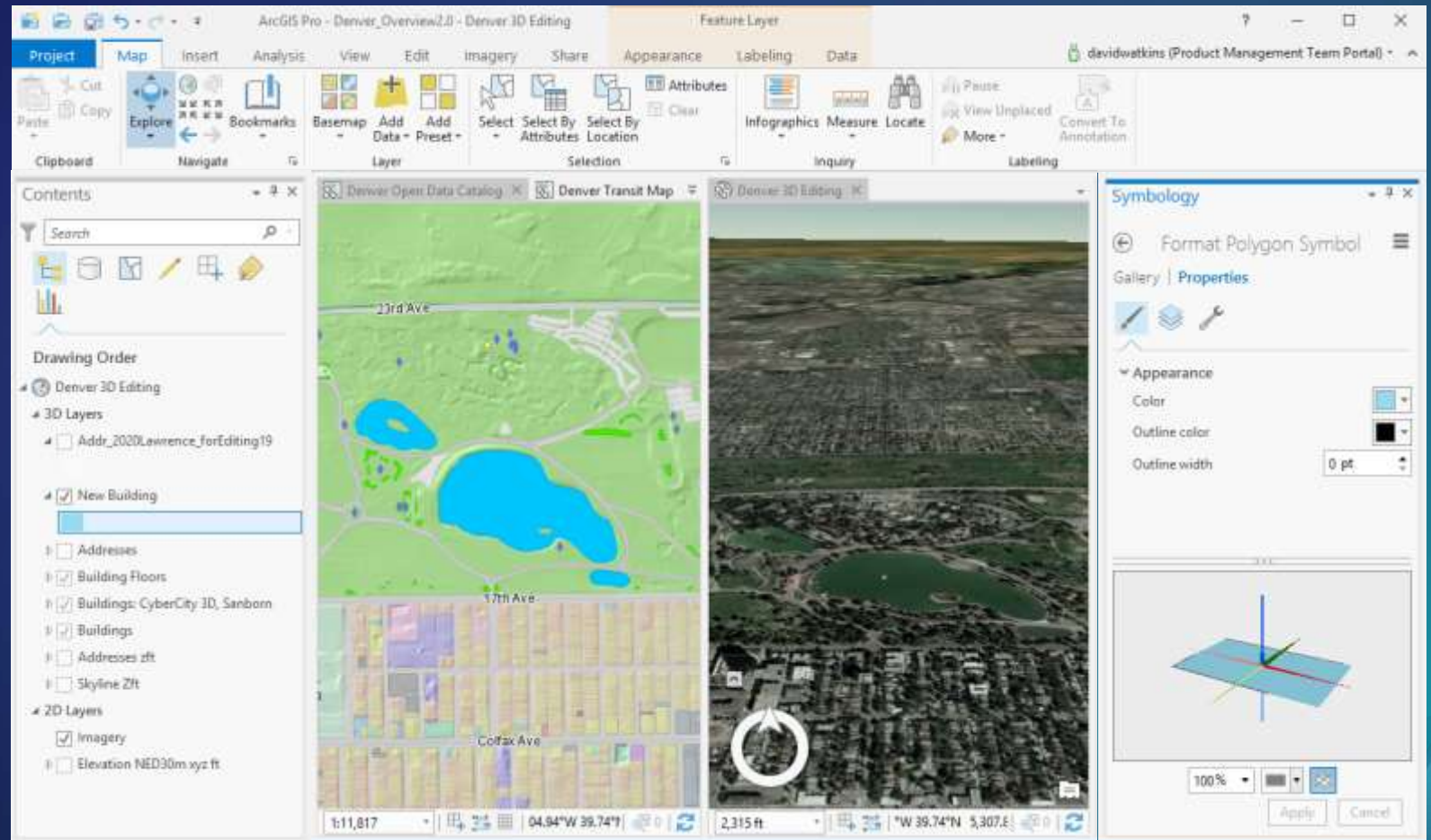
Note: Notifications changed at 2.2

- Occasionally, things may differ slightly
 - Example: OLE objects are not supported
 - Label placement has been improved
 - Anti-aliasing used for text and line work
- Check the notifications



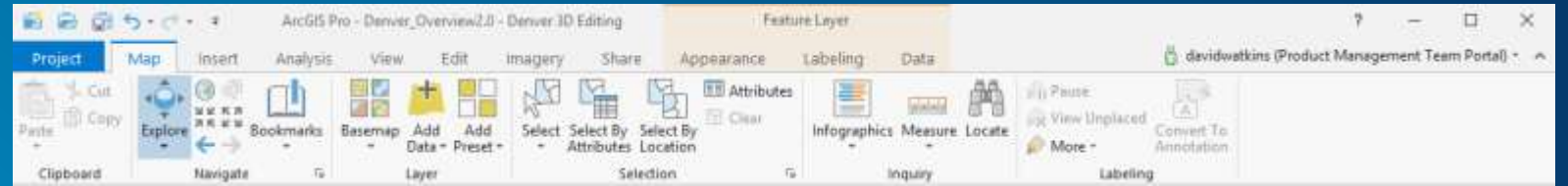
What are some key differences when working with ArcGIS Pro?

The user interface is new



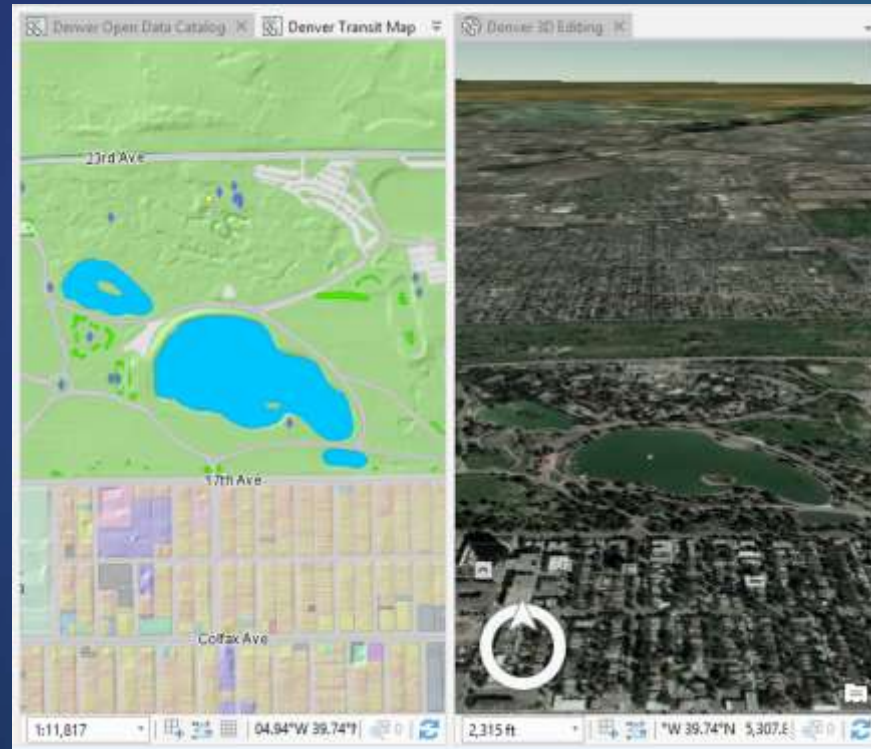
The user interface is new

- **Contextual ribbon**



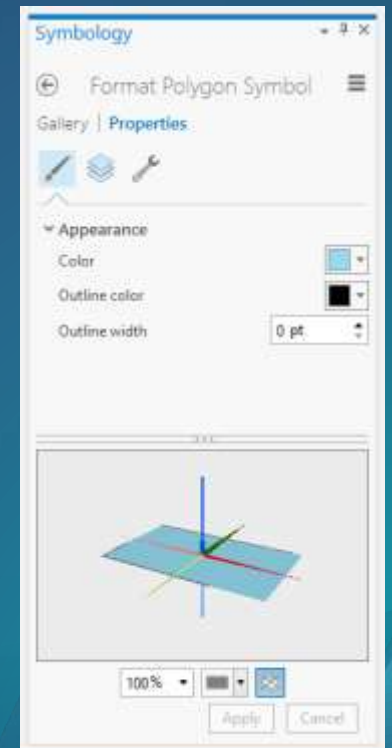
The user interface is new

- Views



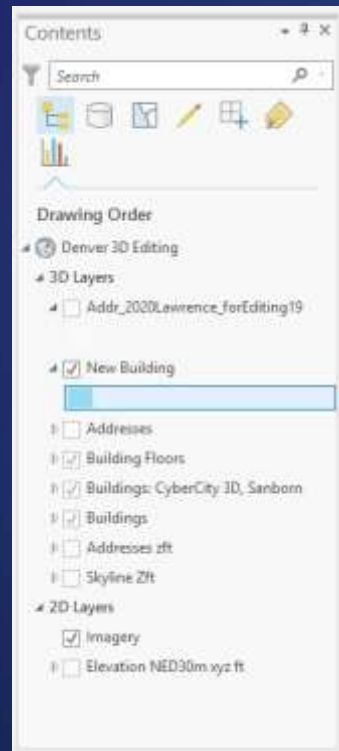
The user interface is new

- Panes



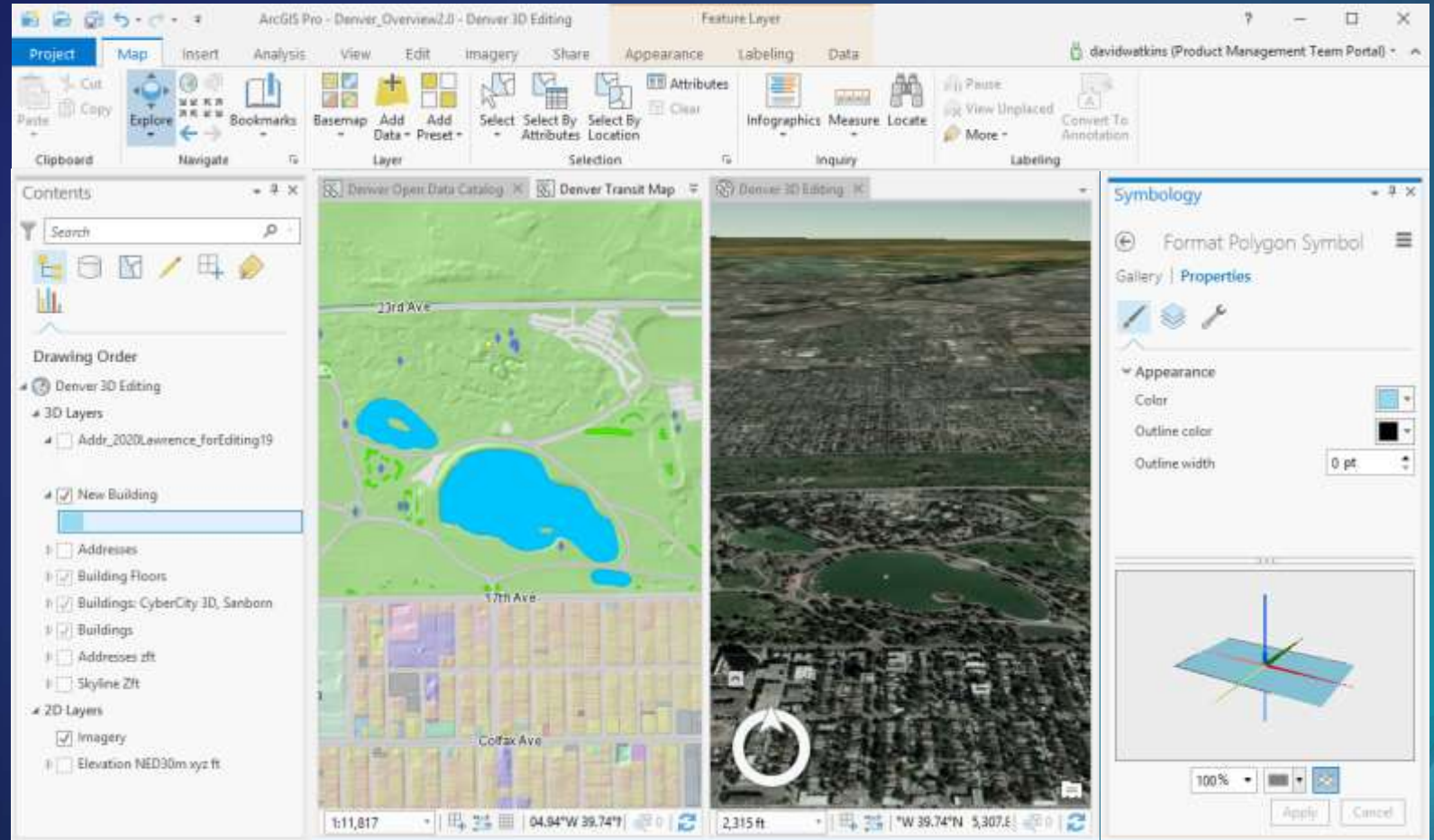
The user interface is new

- **Contents**



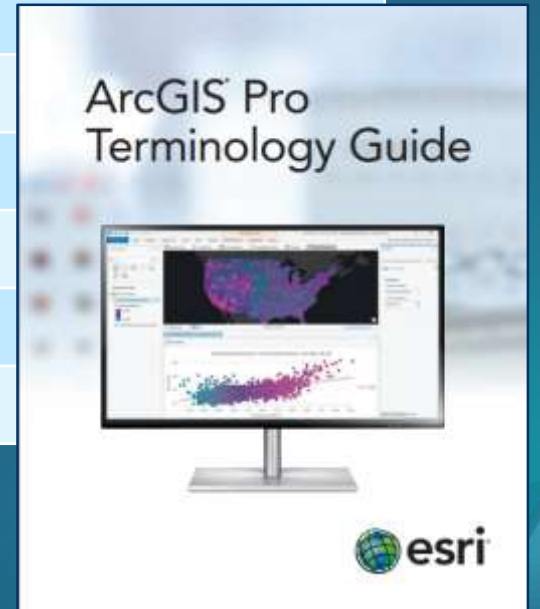
The user interface is new, but concepts are the same

- Contextual ribbon
- Views
- Panes
- Contents



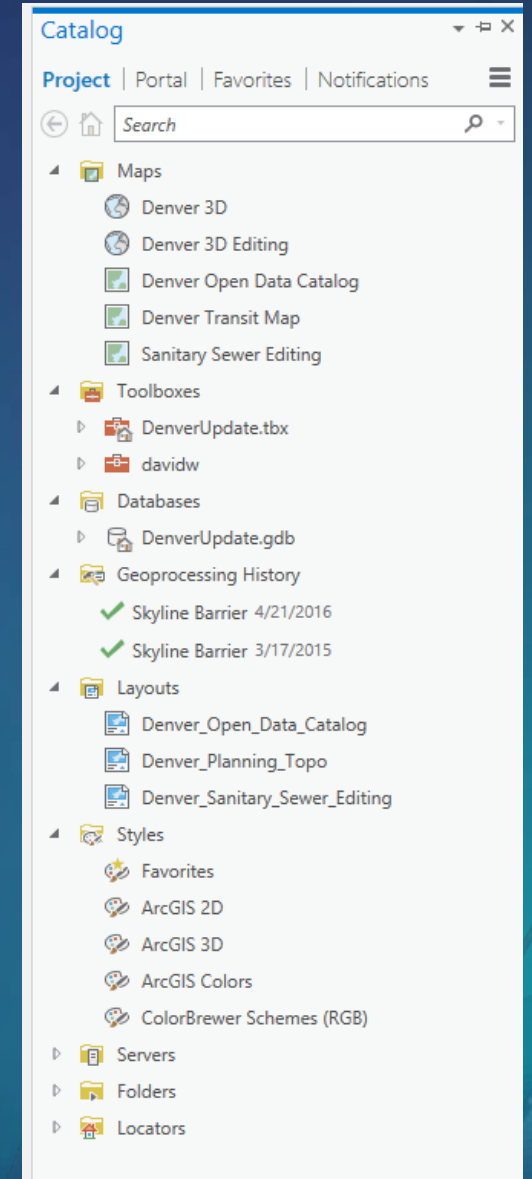
ArcGIS Pro uses some new terminology

| ArcMap | ArcGIS Pro |
|--------------------------|----------------|
| Data View | Map View |
| Data Frame | Map Frame |
| Active Data Frame | Active View |
| Data Driven Pages | Map Series |
| Find tool | Locate tool |
| Create Folder Connection | Add Folder |
| Marker Symbol | Point Symbol |
| Fill Symbol | Polygon Symbol |



In ArcGIS Pro, you work with projects

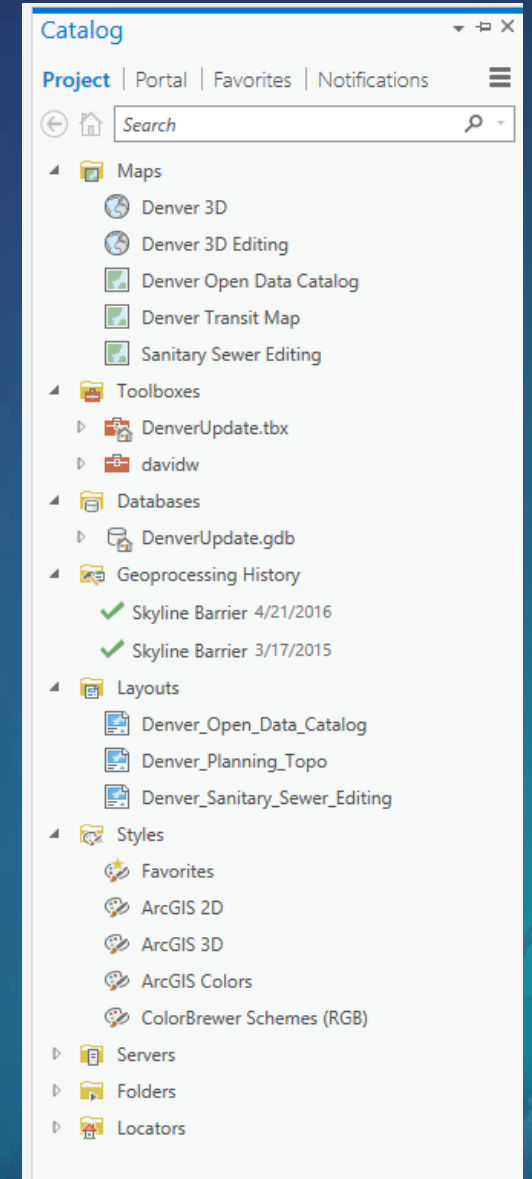
- Multiple maps and layouts
- Database, folder, server connections
- Tools and toolboxes
- Project styles
- Default geodatabase



In ArcGIS Pro, you work with projects

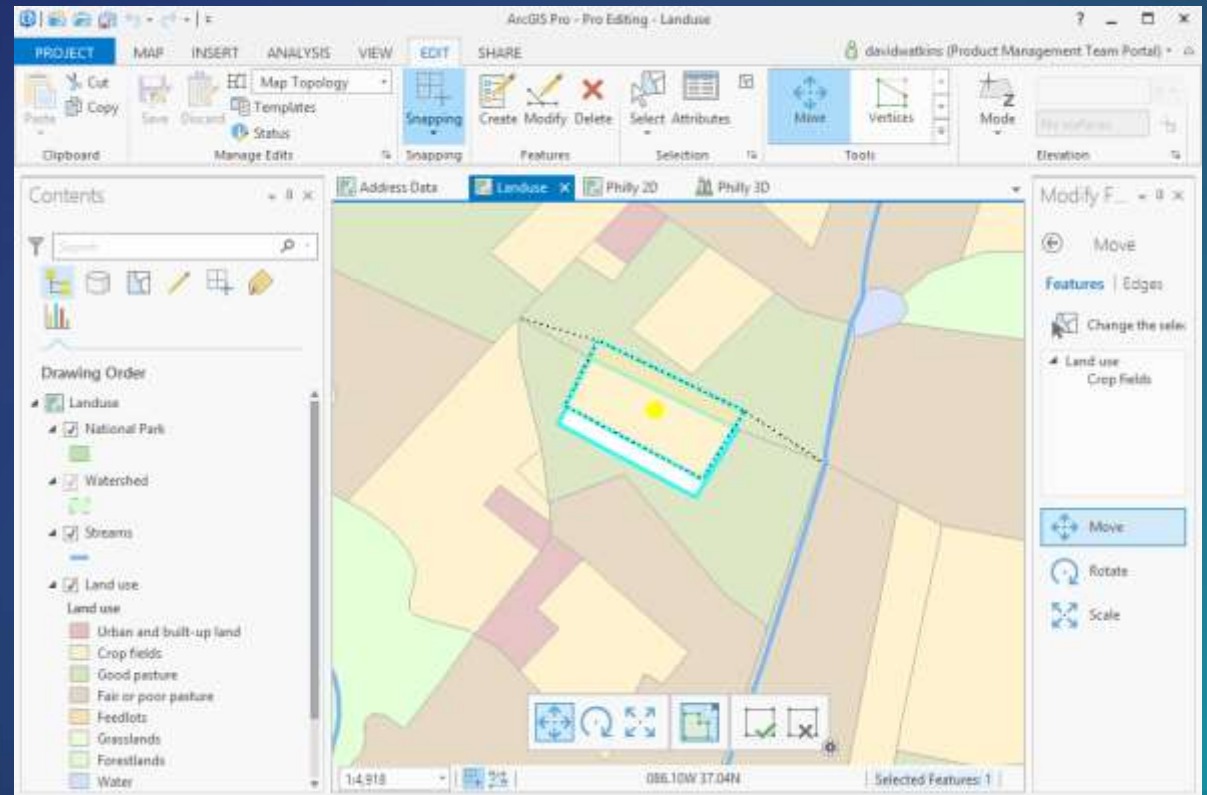
- Multiple maps and layouts
- Database, folder, server connections
- Tools and toolboxes
- Project styles
- Default geodatabase

All can be easily packaged and shared



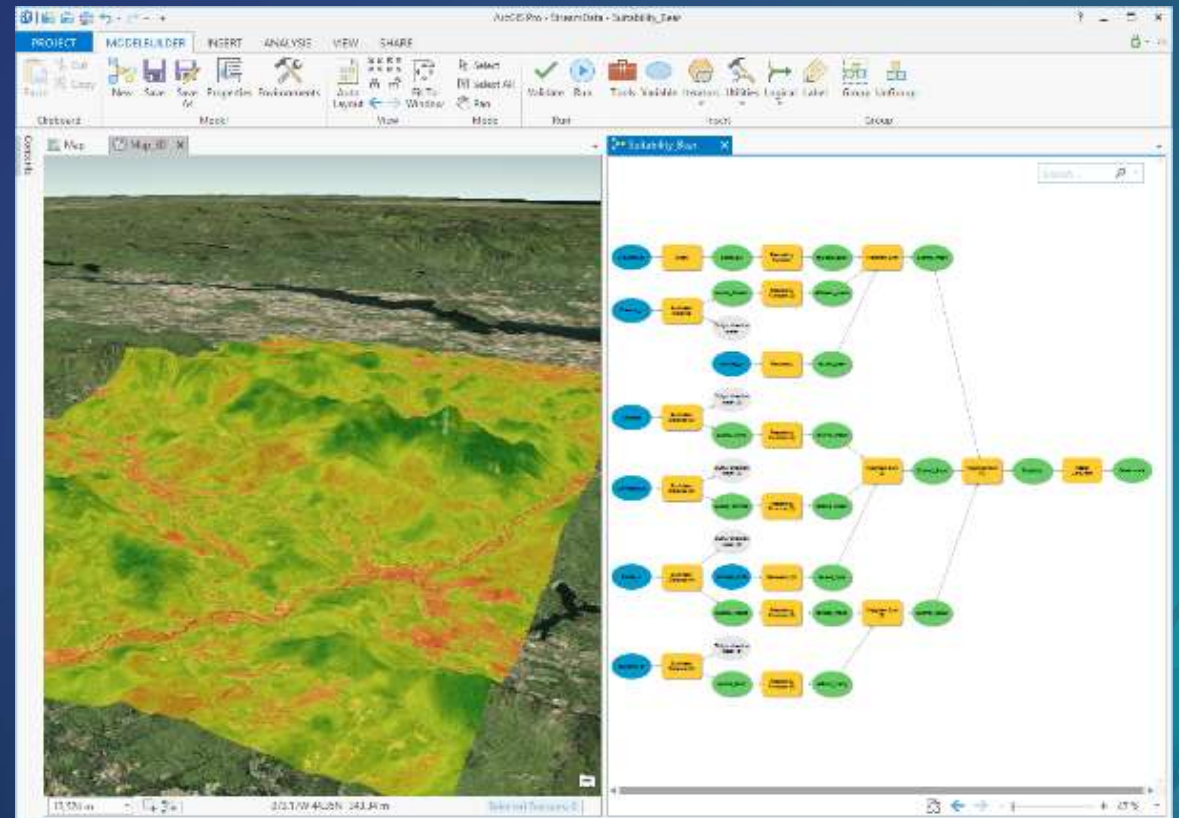
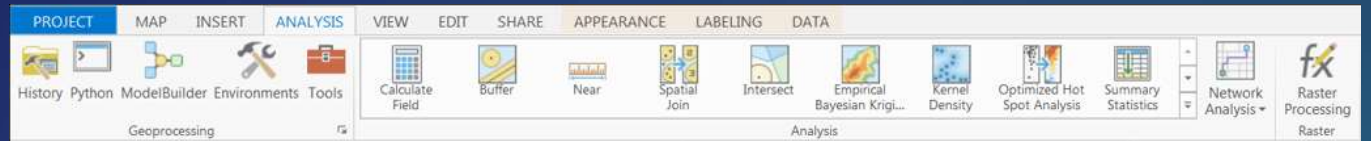
Editing in ArcGIS Pro

- No need to start and stop editing
- Create and modify features
- Edit versioned data
- Edit map and geodatabase topology
- Group templates



Analysis in ArcGIS Pro

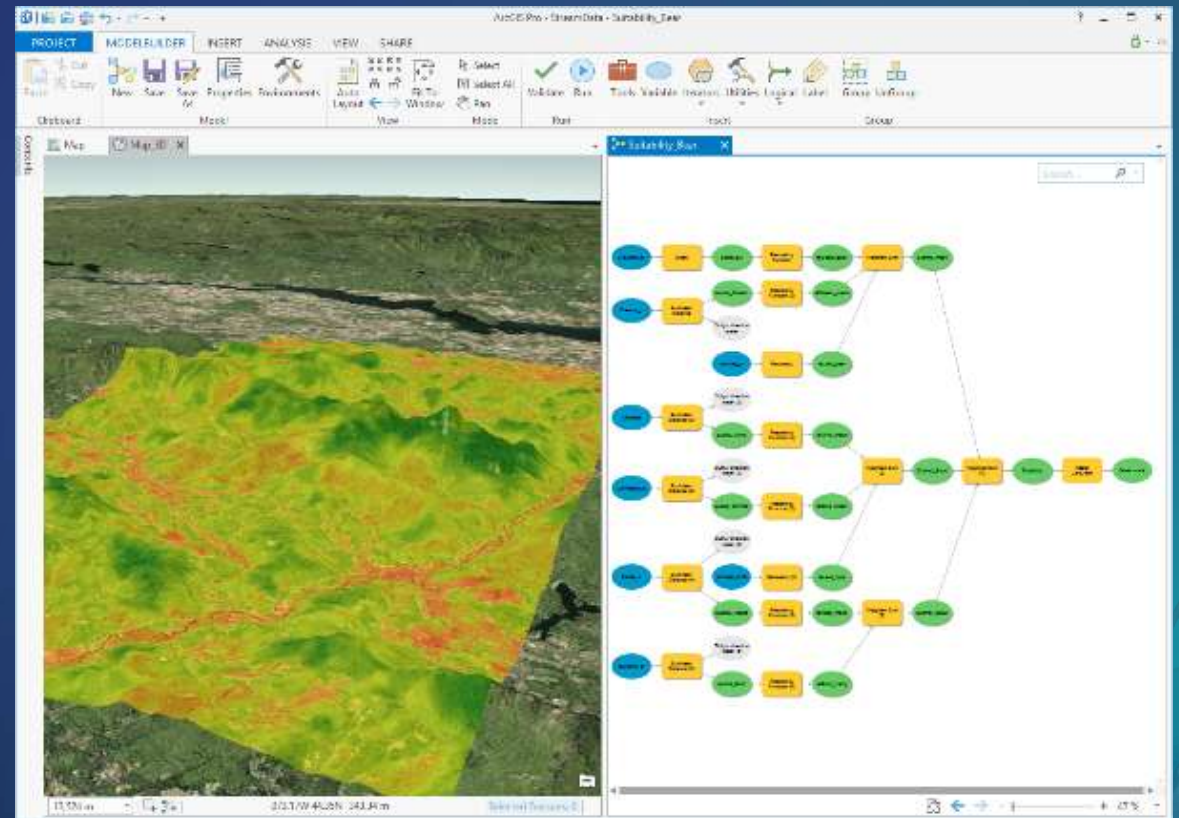
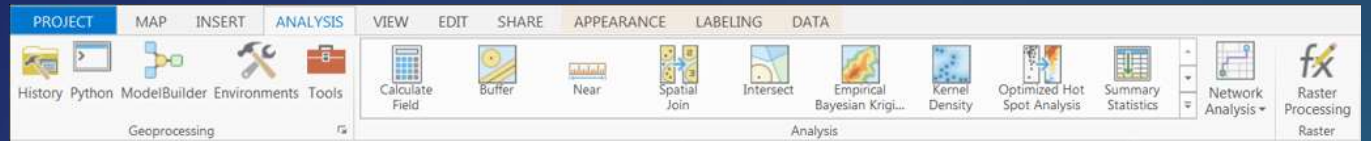
- Analysis tab
- Geoprocessing tool panes
- ModelBuilder
- Python
- Customizable gallery of tools



Analysis in ArcGIS Pro

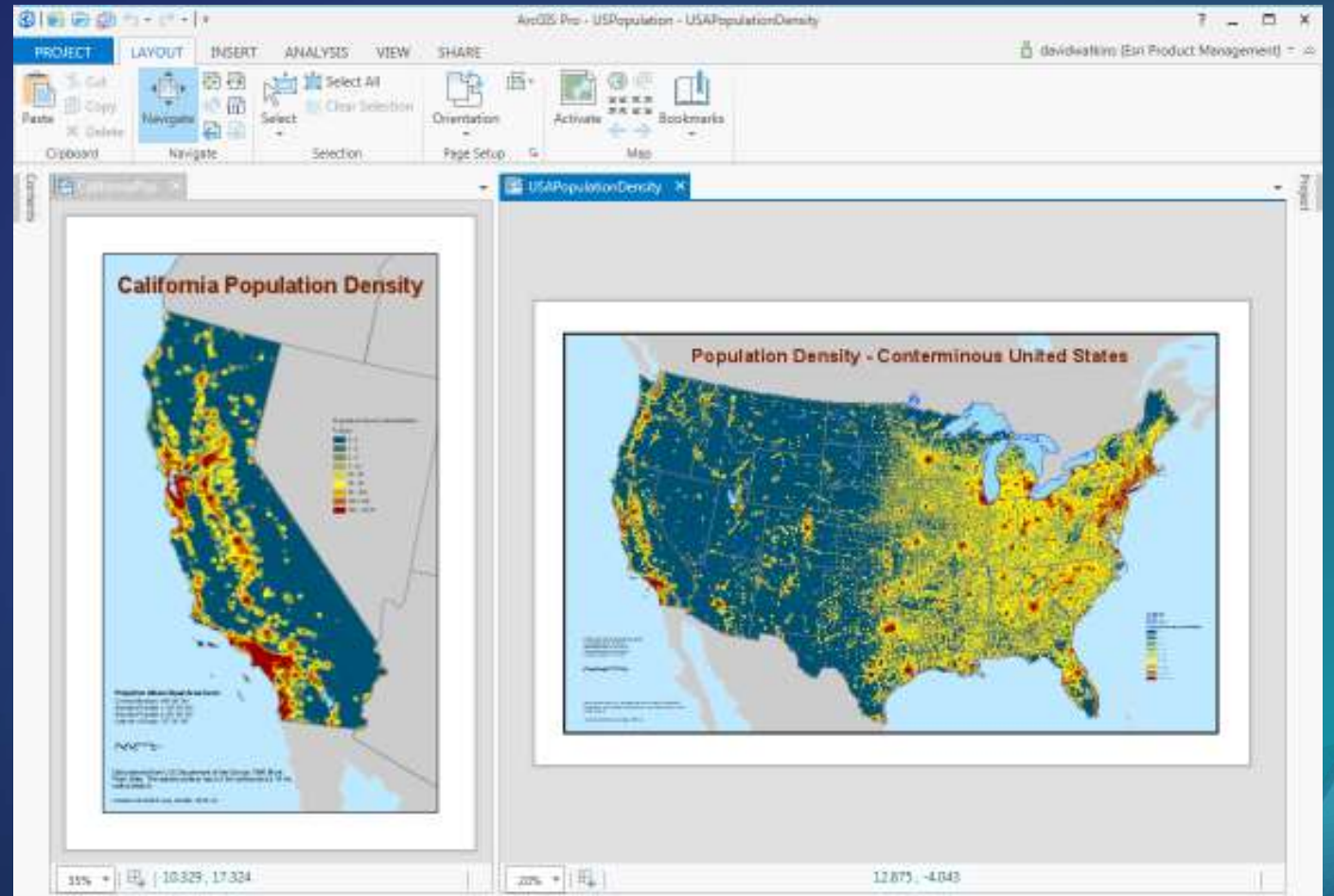
- Analysis tab
- Geoprocessing tool panes
- ModelBuilder
- Python
- Customizable gallery of tools

Analyze tools for Pro



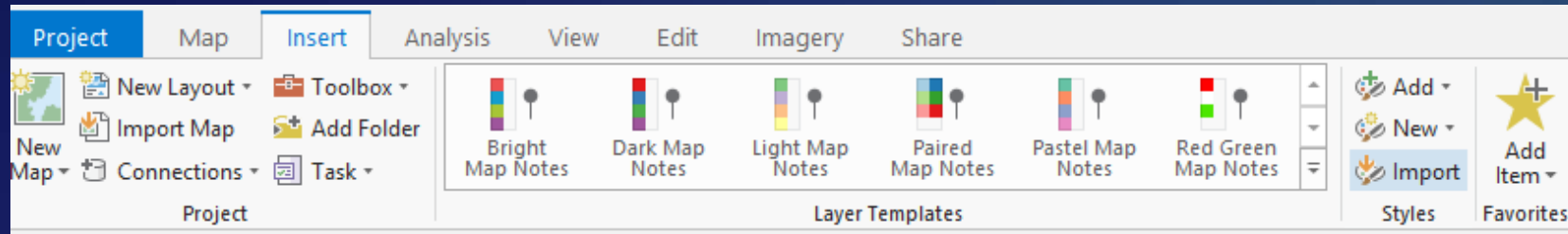
Mapping in ArcGIS Pro

- Multiple layouts
- Anti-aliasing
- Transparency
- Map series
- 3D mapping
- Animation



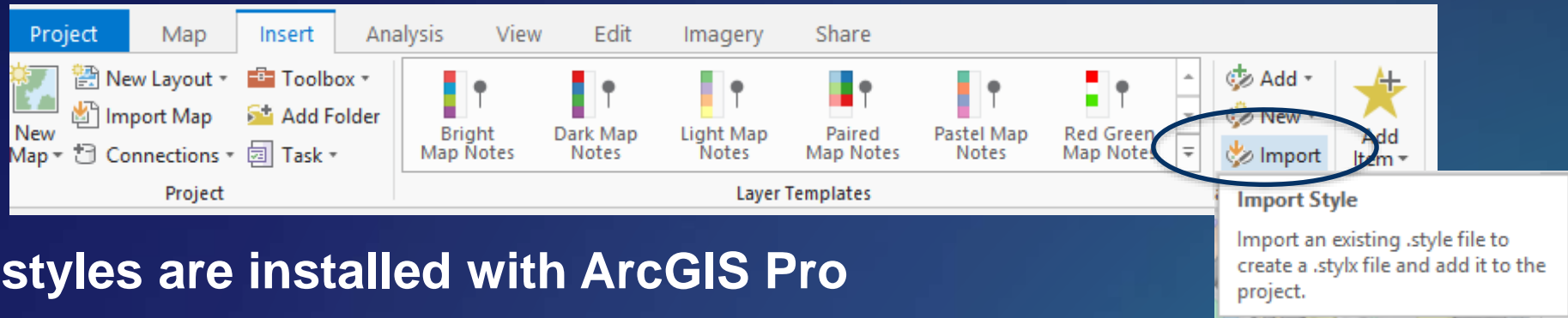
Where are my styles?

Where are my styles?



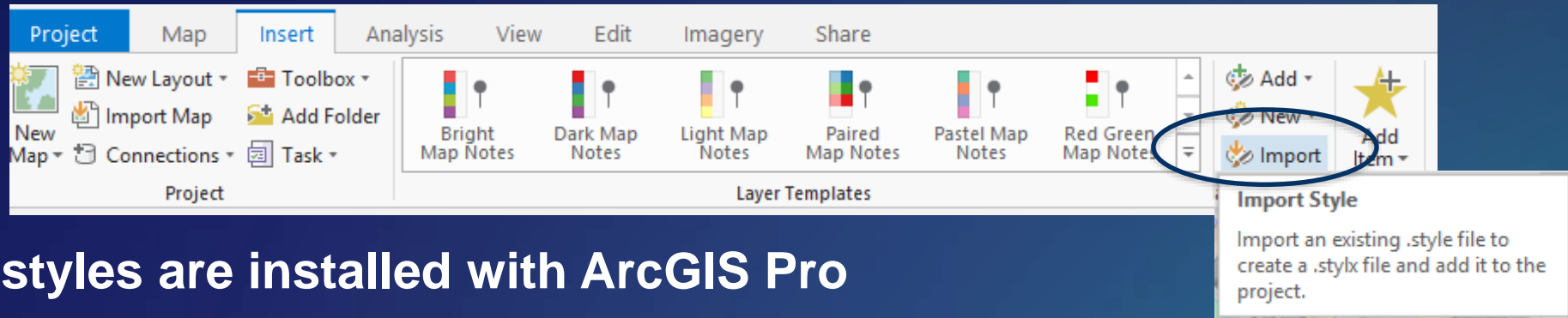
- Not all styles are installed with ArcGIS Pro
- New style format (.stylx)
- Styles from ArcMap and custom styles can be imported

Where are my styles?

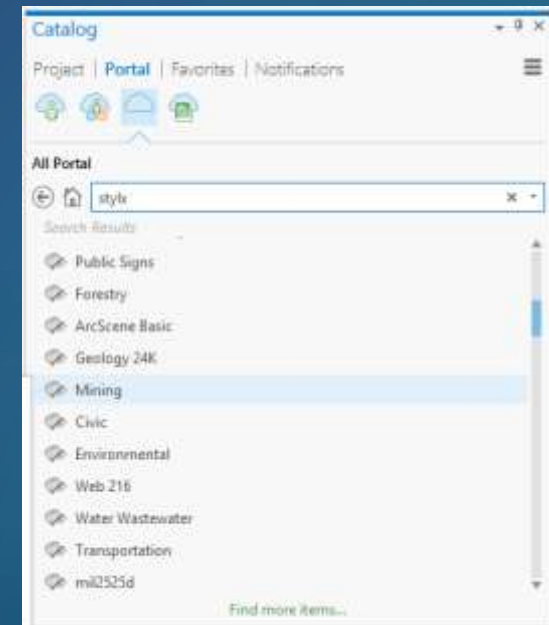


- Not all styles are installed with ArcGIS Pro
- New style format (.stylx)
- Styles from ArcMap and custom styles can be imported

Where are your styles?



- Not all styles are installed with ArcGIS Pro
- New style format (.stylx)
- Styles from ArcMap and custom styles can be imported
- Add styles to your project from ArcGIS Online



The background is a solid dark blue gradient. In the top-left corner, there are several thin, parallel diagonal lines in shades of teal, green, and red. In the bottom-right corner, there is a complex arrangement of overlapping, semi-transparent geometric shapes, including rectangles and polygons, in various colors like orange, yellow, green, and blue, creating a sense of depth and movement.

Get Started

ArcGIS Pro migration resources

- Training Classes

The screenshot shows the Esri Training Catalog search results for 'Pro Migration'. The page has a dark blue header with the 'Training' logo and the tagline 'Your Location for lifelong learning'. Below the header is a navigation bar with links: Main, Catalog (selected), My Learning, Certification, and Help. A search bar contains the text 'Pro Migration'. Below the search bar are filters: 'Search tips', 'FILTER BY: All GIS Capabilities', 'All Products', and 'All Learning Formats'. There are also checkboxes for 'Available with maintenance' and 'Free training'. The results are sorted by 'Relevance' and show 136 results with 30 items displayed. Three training items are visible:

| Training Seminar | Duration | Title | Created |
|-------------------|---|-------------------------------------|---------|
| 60 Minutes | Going Pro: ArcGIS Pro Essentials for ArcMap Users | Created June 15, 2017 | |
| 1 Hour | Building ArcGIS Pro Add-Ins and Solution Configurations | Created October 12, 2017 | |
| 2 Days (16 Hours) | Migrating from ArcMap to ArcGIS Pro | With faster tools and integrated 2D | |

ArcGIS Pro migration resources

- Training Classes
- Videos

Secure | https://www.youtube.com/watch?v=Y_o4D5Z4nB8&feature=youtu.be&list=PLaPDDLTCmy4YcXpv_ypX3YicMHVUOuGYR ☆

YouTube Search SIGN IN

UC esri

ArcGIS Pro: Tips and Tricks

Ty Fitzpatrick
J.D. Overton

@ArcGISPro

0:01 / 1:05:30

ArcGIS Pro: Tips and Tricks

1,809 views

7 0 SHARE

Esri Events
Published on Aug 23, 2017

SUBSCRIBE 4.7K

Learn what's new in the latest releases of ArcGIS Pro and how to more efficiently create great

Esri UC 2017 Tech Sessions
Esri Events - 8 / 51

ArcGIS Pro: Tips and Tricks
Esri Events
1:05:31

Managing Utility and Telco Networks with ArcGIS
Esri Events
1:11:20

ArcGIS Online Steps For Success: A Best Practices Approach
Esri Events
1:28:30

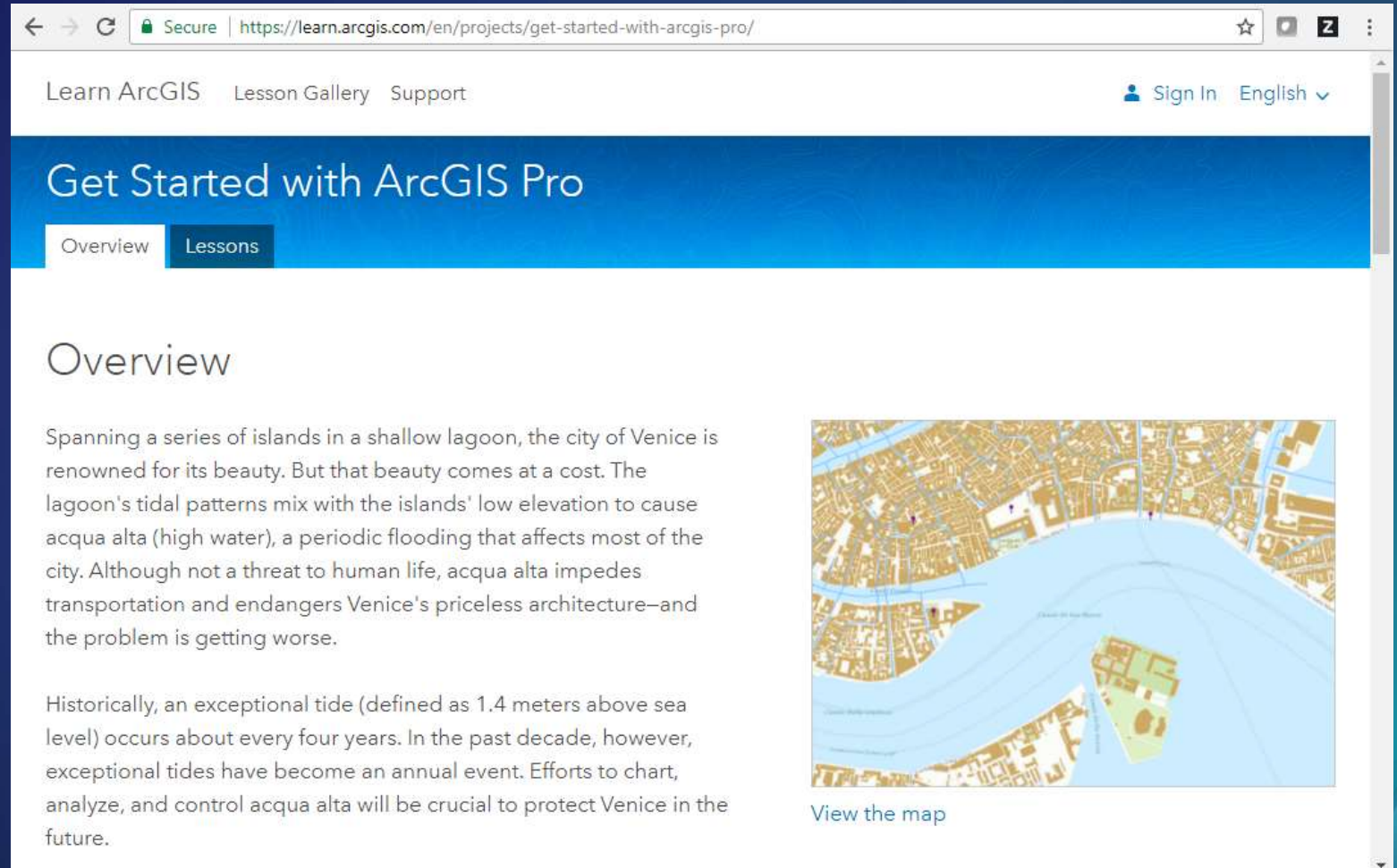
ArcGIS Online: Data Exploration with Smart Mapping
Esri Events
1:00:19

ArcGIS Pro: Migrating from ArcMap
Esri Events
1.6K views
1:15:48

ArcGIS Pro: Mapping and Visualization
Esri Events

ArcGIS Pro migration resources

- Training Classes
- Videos
- [Learn.ArcGIS.com](https://learn.arcgis.com)



Learn ArcGIS Lesson Gallery Support Sign In English


Get Started with ArcGIS Pro

Overview Lessons

Overview

Spanning a series of islands in a shallow lagoon, the city of Venice is renowned for its beauty. But that beauty comes at a cost. The lagoon's tidal patterns mix with the islands' low elevation to cause acqua alta (high water), a periodic flooding that affects most of the city. Although not a threat to human life, acqua alta impedes transportation and endangers Venice's priceless architecture—and the problem is getting worse.

Historically, an exceptional tide (defined as 1.4 meters above sea level) occurs about every four years. In the past decade, however, exceptional tides have become an annual event. Efforts to chart, analyze, and control acqua alta will be crucial to protect Venice in the future.



[View the map](#)

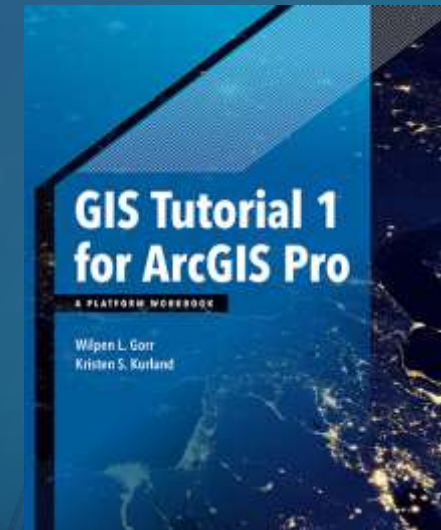
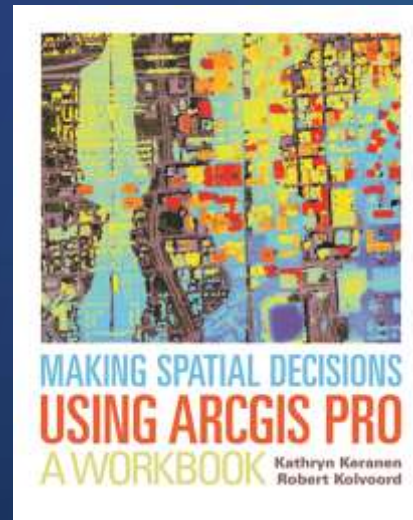
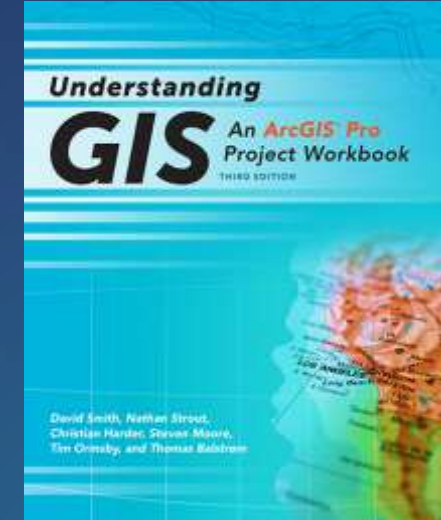
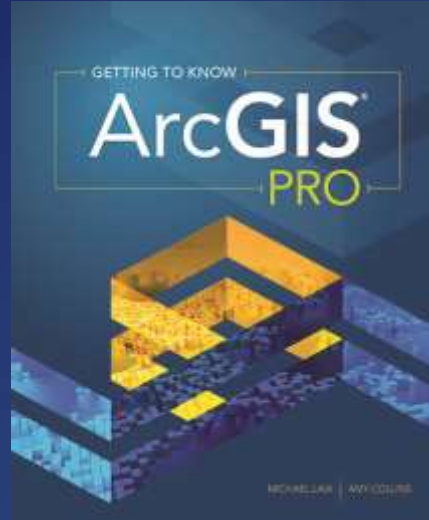
ArcGIS Pro migration resources

- Training Classes
- Videos
- Learn.ArcGIS.com
- Blogs



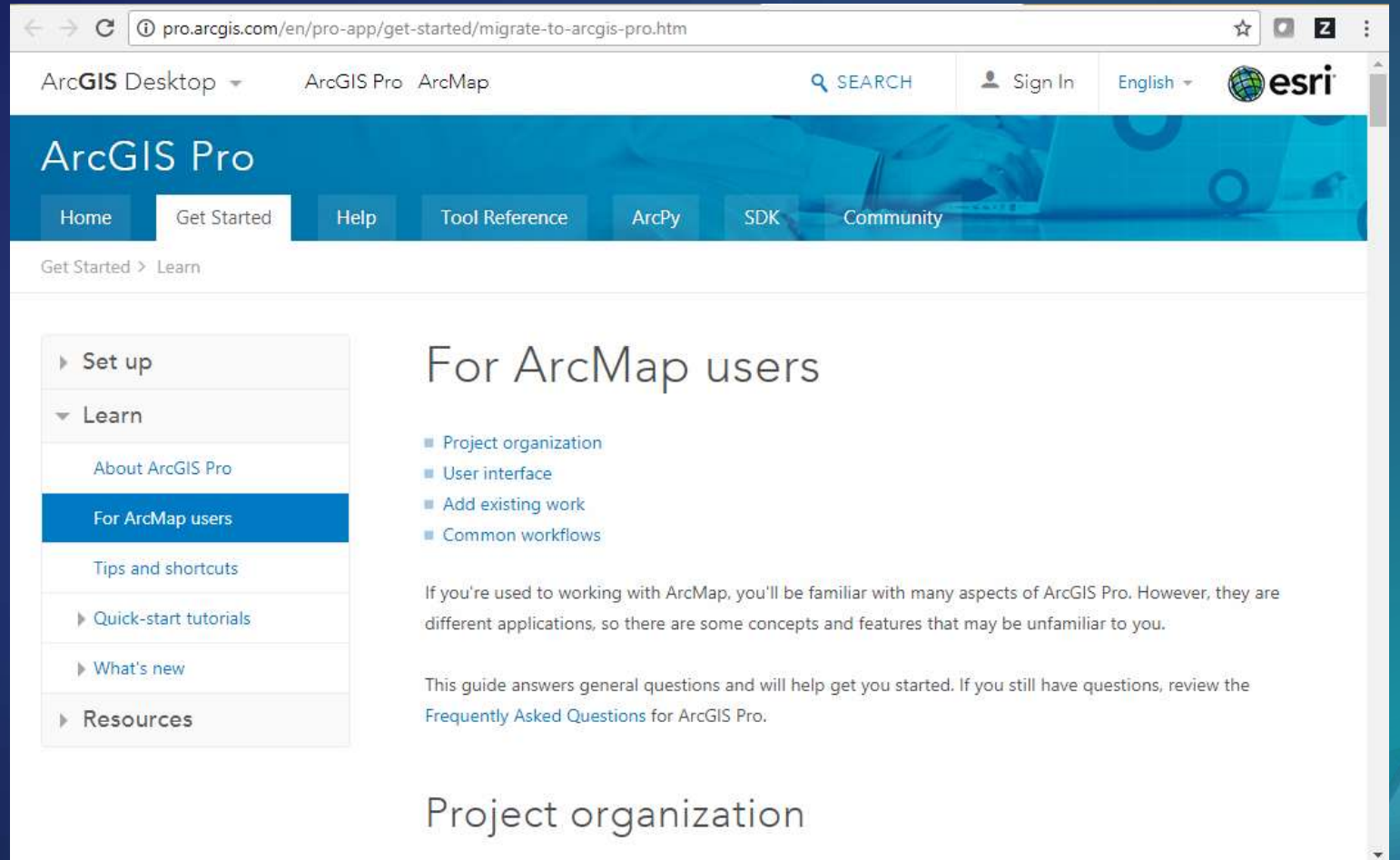
ArcGIS Pro migration resources

- Training Classes
- Videos
- [Learn.ArcGIS.com](https://www.esri.com/arcgis/training)
- Blogs
- Books



ArcGIS Pro migration resources

- Training Classes
- Videos
- Learn.ArcGIS.com
- Blogs
- Books
- Help



The screenshot shows the ArcGIS Pro migration resources page on the Learn.ArcGIS.com website. The browser address bar displays the URL: pro.arcgis.com/en/pro-app/get-started/migrate-to-arcgis-pro.htm. The page header includes navigation links for ArcGIS Desktop, ArcGIS Pro, and ArcMap, along with a search bar, a sign-in button, and a language selector set to English. The main navigation bar features links for Home, Get Started, Help, Tool Reference, ArcPy, SDK, and Community. The breadcrumb trail indicates the current location: Get Started > Learn.

The left sidebar contains a table of contents with the following items:

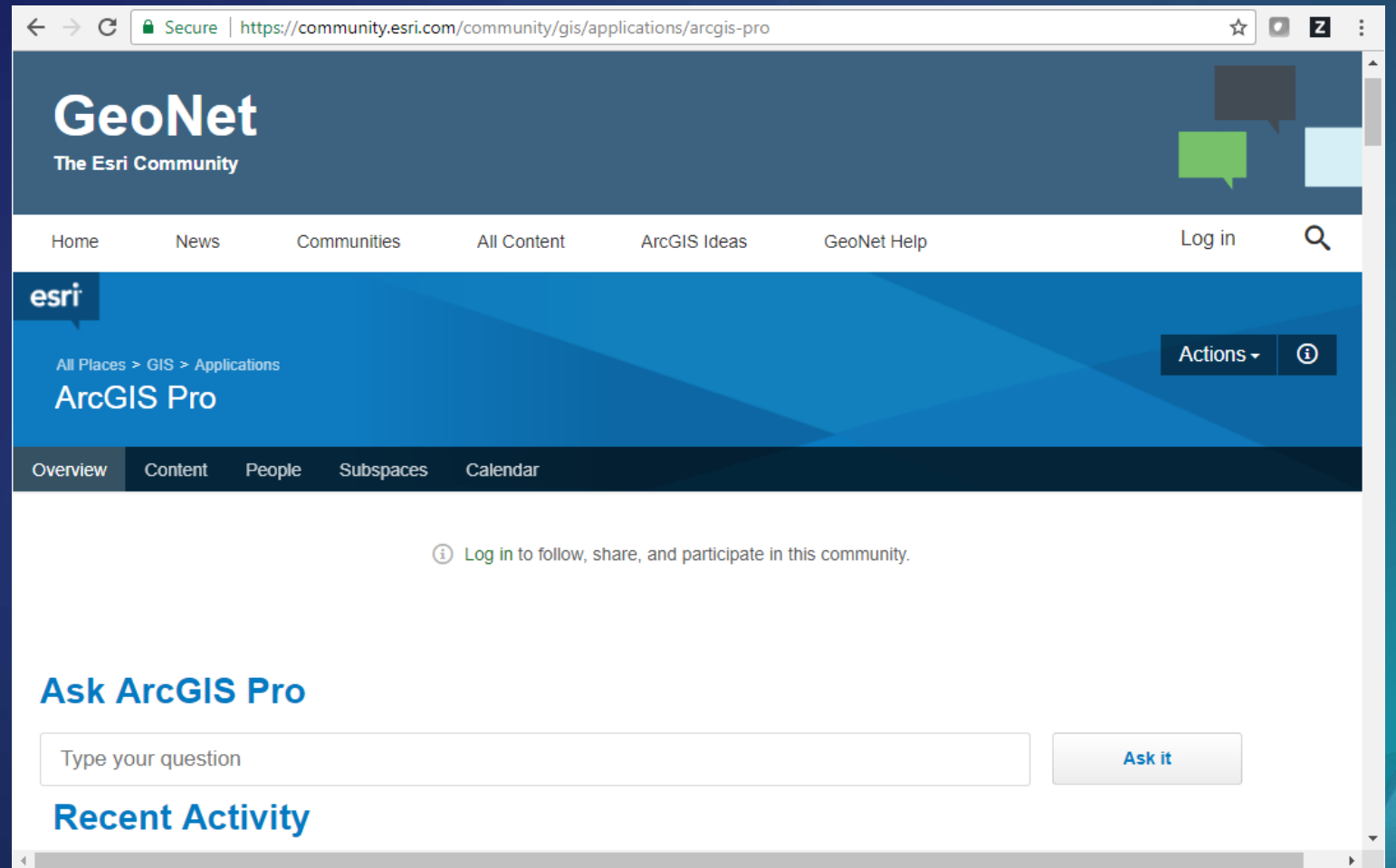
- ▶ Set up
- ▼ Learn
 - About ArcGIS Pro
 - For ArcMap users**
 - Tips and shortcuts
 - ▶ Quick-start tutorials
 - ▶ What's new
- ▶ Resources

The main content area is titled "For ArcMap users" and includes a list of topics: Project organization, User interface, Add existing work, and Common workflows. A paragraph explains that while many aspects of ArcGIS Pro are familiar to ArcMap users, some concepts and features may be unfamiliar. It states that the guide answers general questions and helps get users started, with a link to the [Frequently Asked Questions](#) for ArcGIS Pro.

The section "Project organization" is partially visible at the bottom of the page.

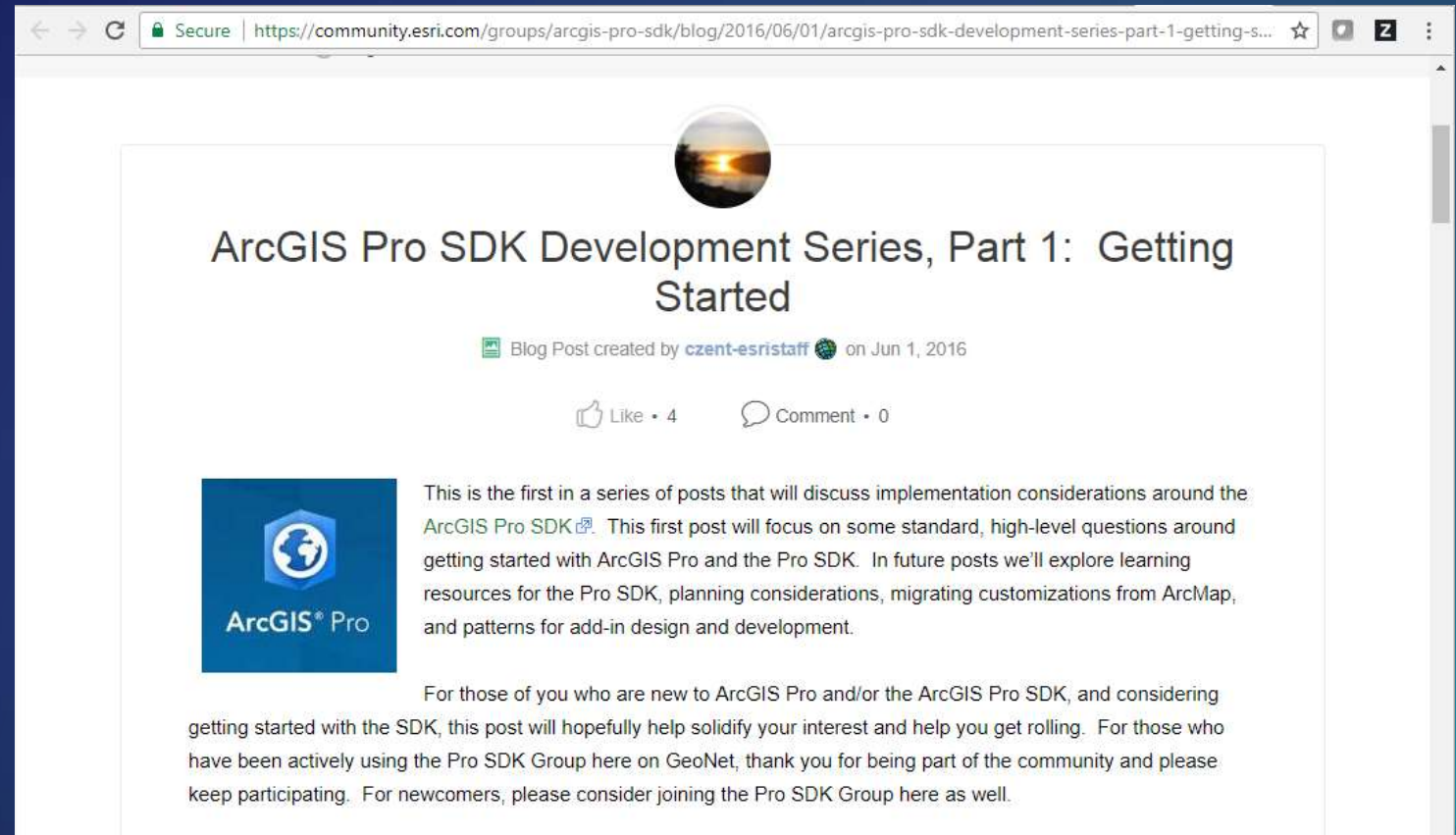
ArcGIS Pro migration resources

- Training Classes
- Videos
- Learn.ArcGIS.com
- Blogs
- Books
- Help
- GeoNet



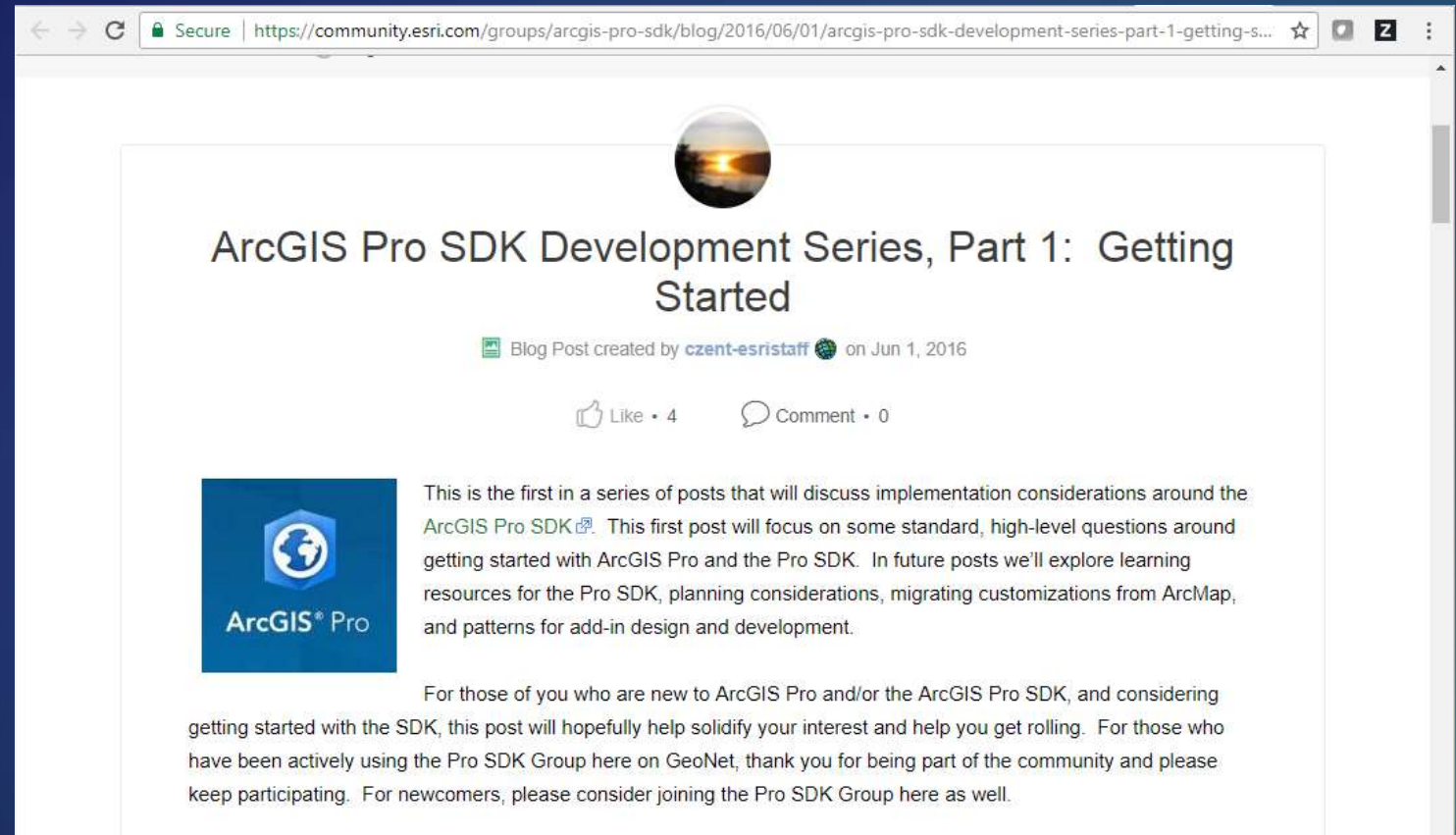
ArcGIS Pro migration resources

- Training Classes
- Videos
- Learn.ArcGIS.com
- Blogs
- Books
- Help
- GeoNet
- Developer Resources



ArcGIS Pro migration resources

- Training Classes
- Videos
- Learn.ArcGIS.com
- Blogs
- Books
- Help
- GeoNet
- Developer Resources



Quick peek Demonstration



Questions?

Slide deck will be made available

msscott@esri.com



esri

**THE
SCIENCE
OF
WHERE**